



Checklist Accessibility Avila Beach Hotel

The Avila Beach Hotel is **perfectly convenient** for travels who need extra accessibility. We regularly host guests in wheelchairs or with walking difficulties. The Avila Beach Hotel has an **on-call General Practitioner** and is available 24 hours a day.

MOST ACCESSIBLE HOTEL IN CURACAO

Practically the entire resort, including beaches, infinity pool and restaurants is completely wheelchair accessible. The hotel even has three Extra Accessible hotel rooms in the Octagon wing (comparable to the Octagon Preferred room type). Our resort recently won the award for Most Accessible Hotel in Curacao by the local Alton Paas foundation who tested Curacao resorts on their accessibility.



Scroll to the next page for a Checklist of our **Public Areas**, **Extra Accessible rooms** including extra **photos** and more information about our **Surroundings**.



Avila Beach Hotel • Penstraat 130, Pietermaai District • Willemstad, Curacao
Tel: +5999 - 7881949 • info@avilabeachhotel.com • www.avilabeachhotel.com

AVILA
BEACH HOTEL



Checklist Accessibility Avila Beach Hotel

PUBLIC AREAS

- Designated handicap parking with a priority location in all our parking lots.
- Step free access (ramped) at Avila's main entrance.
- Elevator to above ground accessible accommodations.
- Five Elevators of which two located at the Octagon hotel wing where three Extra Accessible rooms are located.
- Entrance of the elevators are 90 centimeters (cm), 35,43 inch (in).
- The control panel in the elevator are all on wheel chair height.
- Walk in entrance at swimming pool and beach.
- Level or ramped access to all public areas:

Bars:	Yes	Restaurants:	Yes***
Infinity Pool:	Yes*	Beaches:	Yes****
Lobby:	Yes	Conference & Banqueting locations	Yes
Toilets	Yes	Avila Fitness Center	Yes
Cloud Nine Spa	No**	Octagon Museum:	Yes

* There is no elevator available for wheelchair entry into the infinity pool, it has a wide stair entry.

** It is possible to order your massage in the comfort of your own hotel room, suite or apartment or Extra Accessible room or seaside spa palapa.

*** Free space under the tables in the restaurant is 73 cm (28,74 in).

**** There isn't a designated path leading directly into the sea that accommodates wheelchairs.

Scroll to the next page for a Checklist of our **Extra Accessible rooms including extra photos** and more information about our **Surroundings**.





EXTRA ACCESSIBLE ROOMS

- 3 Extra Accessible rooms located in the Octagon wing.
- On second (#218), third (#318) and fourth floor (#418), all perfectly accessible by elevator.
- One of the two elevators is extra large.
- All Extra Accessible rooms are equally equipped and sized.
- Simiral to room type: Octagon Standard.
- Min. / max. occupation: 2 persons.
- The sizes of the room (LxB) is approximately 520 cm x 600 cm (204 x 236 in).
- The entrance of the room is 100 cm (39, 37 in).
- The entrance to the spacious balcony is 100 cm (39,37 in)
- The entrance of the bathroom is 88 cm (34,64 in).
- The height of the bed is 75 cm (29,52 in).
- The height of the toilet is 49 cm (19,29 in).
- Maneuvering space on left side of the bed – 145 cm (57,08 in).
- Lower hanging space in closet.
- Mid-height light switches and power outlets.
- The type of flooring in the room is tiles
- Grab bars in bathroom.
- Enough space to maneuver a wheelchair within the bathroom.
- Hand grips next to toilet.
- Hand grips in the shower.
- Roll-in shower without any obstacles.
- Shower chair is available upon request.

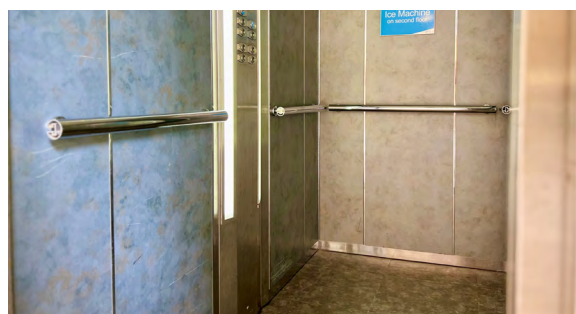
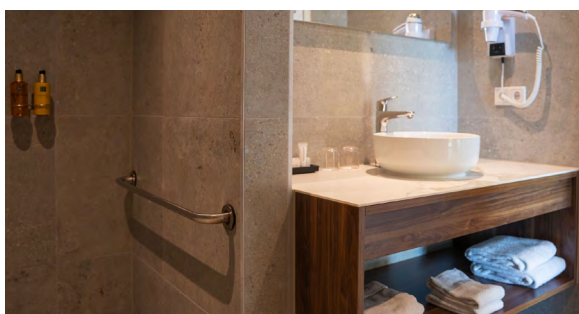
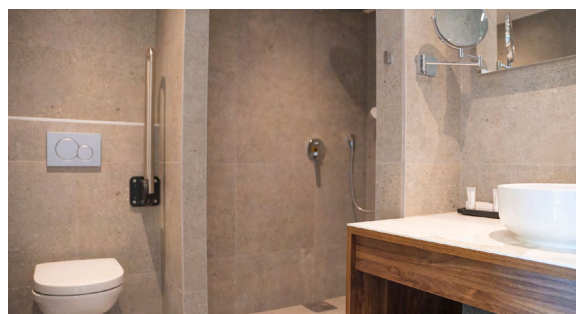
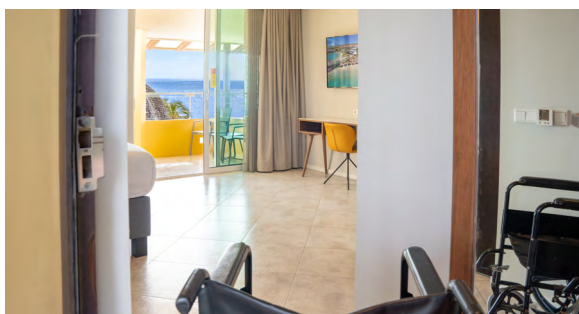
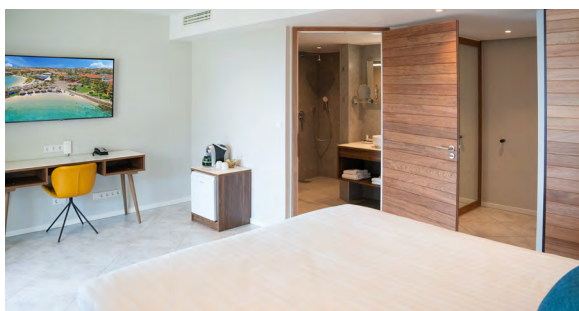
Scroll to the next page to see **detailed photos** of our **Extra Accessible Rooms** and more information about our **Surroundings**.





WHEELCHAIR ACCESSIBLE ROOMS

Please see below the **detailed photos** of our **Extra Accessible Rooms**.



Scroll to the next page for a Checklist for more information about our **Surroundings**.



Avila Beach Hotel • Penstraat 130, Pietermaai District • Willemstad, Curacao
Tel: +5999 - 7881949 • info@avilabeachhotel.com • www.avilabeachhotel.com

AVILA
BEACH HOTEL



AVILA BEACH HOTEL

Checklist Accessibility | Surroundings

Checklist Accessibility around the Avila Beach Hotel

The Avila Beach Hotel is located in the historic and lively Pietermaai District and very close to downtown Willemstad (Punda). On this page you will find more information about how accessible our surroundings are and how close by drugstores, pharmacies and hospitals are.

SURROUNDINGS

- The two restaurants and one bar on-site all are wheelchair accessible.
- In our street, Penstraat, you will find 10+ restaurants and bars within a 10-minute walking distance reachable via a paved pedestrian path.
- All restaurants and bars within walking distance offer dining areas on the ground floor.
- The area around our hotel is not hilly or uneven.
- The pathways surrounding the hotel are mostly paving stones.

POINTS OF INTEREST

- Local market and downtown area are just a 5-minute drive (+/- 1.5 miles).
- The Avila Beach Hotel offers a complimentary shuttle service to and from downtown on weekdays.
- A drugstore with pharmacy is just a 1-minute drive away (+/- 0.3 miles).
- The Curaçao Medical Center (CMC) hospital is a 6-minute drive (+/- 1.75 miles).

Kindly contact us via our contact info below should you have additional questions or remarks.

We look forward to welcoming you to the Avila Beach Hotel, also guests with reduced mobility.

The impulse to travel is one of the hopeful symptoms of life. **Come as you are**, and feel the warmth at the Avila Beach Hotel.



Avila Beach Hotel • Penstraat 130, Pietermaai District • Willemstad, Curacao
Tel: +5999 - 7881949 • info@avilabeachhotel.com • www.avilabeachhotel.com

AVILA
BEACH HOTEL